

# SUNTERRA PARK

Sharm El Sheikh

CONCEPTUAL DESIGN

AZURE | ARCHITECTS





## Well rounded living in the well connected address of Sharm EL Sheikh

Sunterra is much more than a mixed-use destination, lying at the intersection of Salam street & the tower Road. It is a holistic outlook on integrated discovery, where every detail is fully-developed around your needs, dictating a never-ending journey of intrigue. A new degree of extraordinary, inviting all corners of the world into one cosmopolitan context where bountiful street wandering and atmospheric accessibility are key.

### **The result ?**

A progressive vision, boasting an unrivaled host of business excellence, inspirational nature, world class hospitality and culinary adventures, perfected by retail luxuries at every touchpoint.

### **Sunterra;**

a well rounded mixed-use destination where vibrancy amplifies and energy multiplies.

# A whole new world of uninterrupted convenience

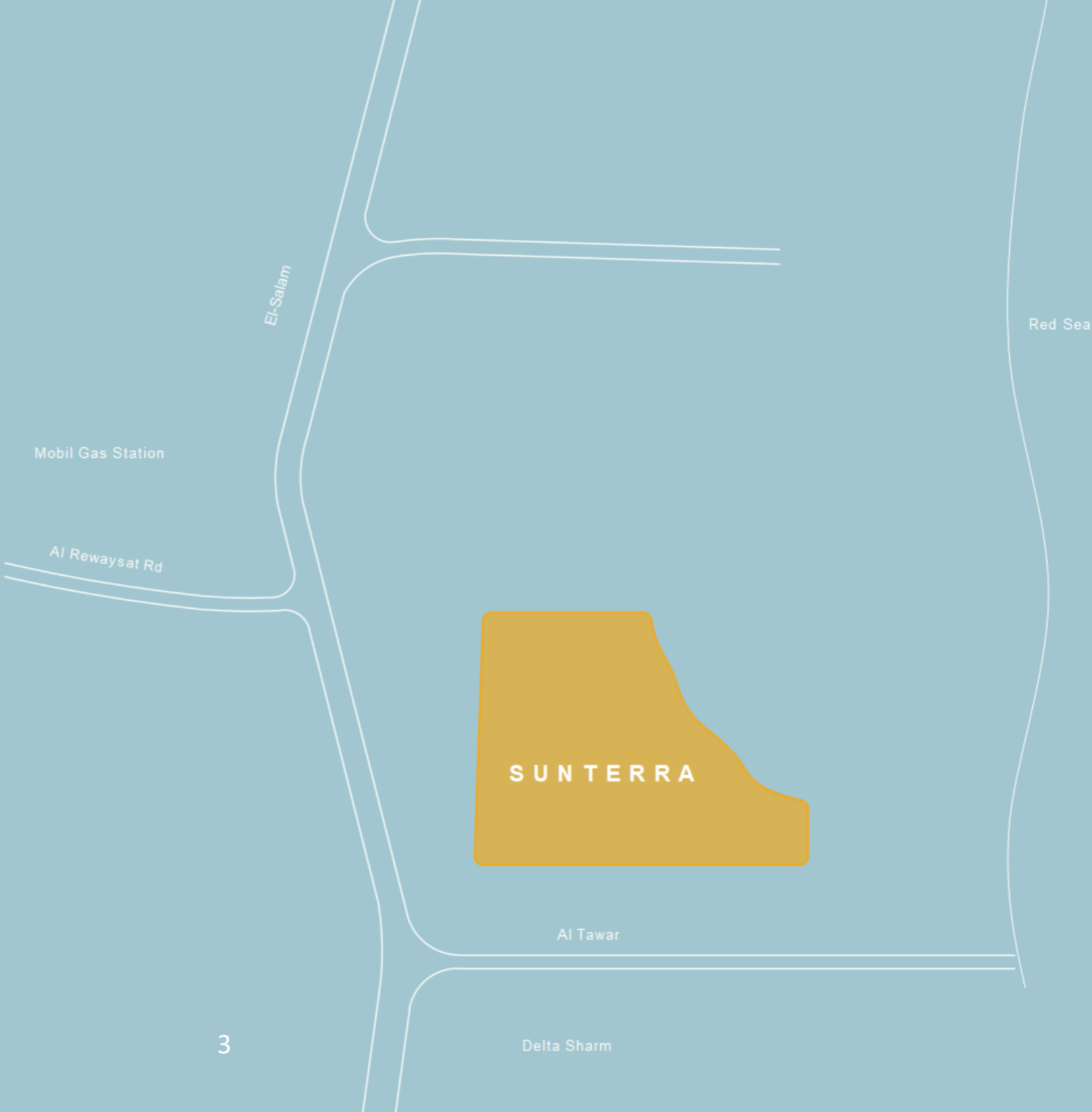
Living at Sunterra translates to life unfolding in every direction, whether within the mixed-use development or outside your intimate world. Crowning a prime location at the meeting point between Al Salam Road & El-Tower Street, Sunterra boasts two different entrances, To facilitate traffic-free accessibility all day long. Handpicked with residents' convenience in mind.

15 mins to  
Sharm El Sheikh  
International Airport

2 mins  
from the Sea

4 mins to  
Neama Bay

5 mins to  
Old market





- TOWNHOUSE
- APARTMENTS (2 BEDROOMS)
- STRIP MALL
- STAND ALONE
- APARTMENTS (1 & 3 BEDROOMS)
- HOTEL
- NURSERY
- KIDS AREA
- PLAYGROUNDS
- GYM



PROJECT  
COMPOSITION



01 STAND ALONE



02 TOWNHOUSE



03 APARTMENT



04 STRIP MALL



05 HOTEL





# V ZONE





FRONT SHOT



BACK SHOT

THE FUN AREA, OPEN-ACCESSIBLE AREAS ARE THE KEY FOR SUCCESS IN ANY PLACE! AND WHERE YOU'RE LIVING SO IT'S SO MUCH FUN AND COMFORTABLE. THAT'S WHERE THE FUN CITY EXISTS.

EXTERIOR SHOT



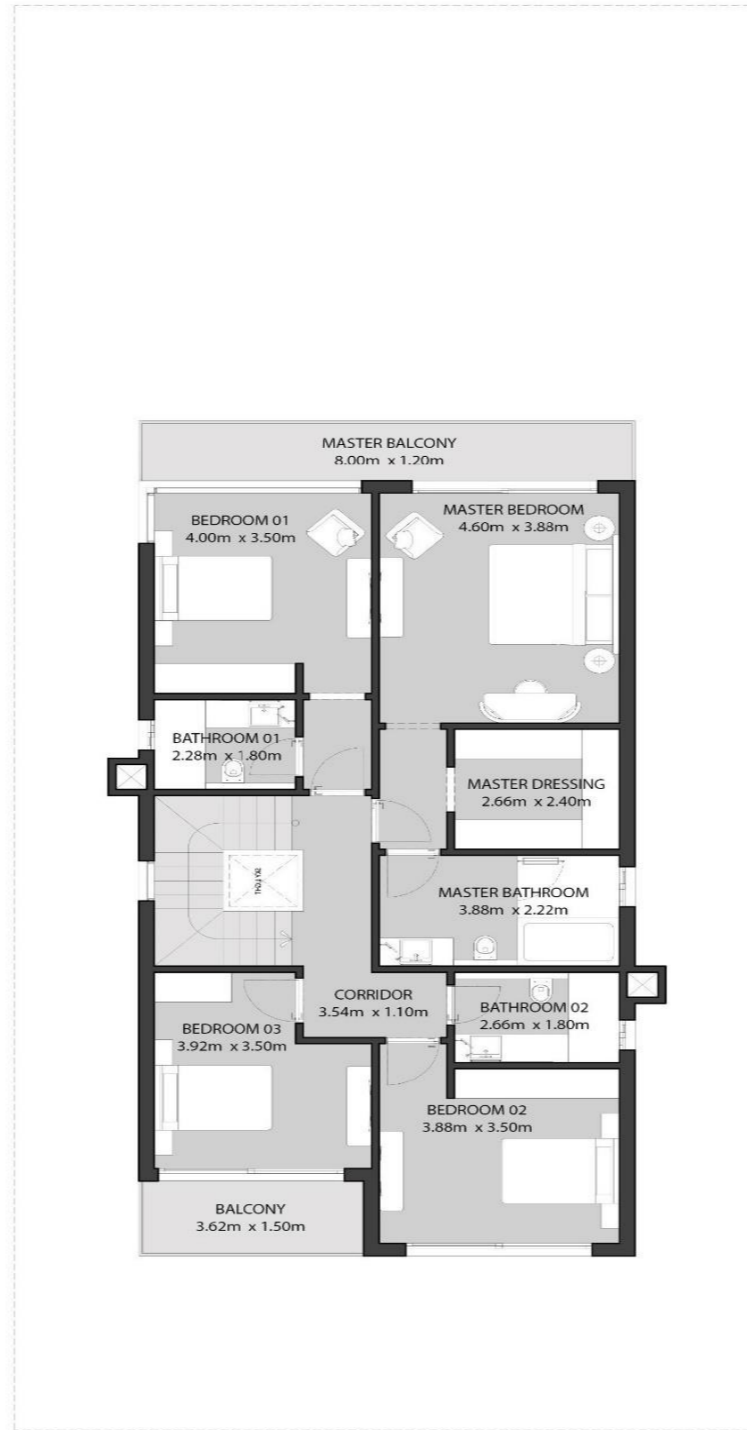
EXTERIOR SHOT



**STAND ALONE LEFT ( 350.00 ) M2**



**GROUND FLOOR 144.00 M2**



**FIRST FLOOR 144.00 M2**

**VILLA NUMBER:**

<b>V9</b>	<b>V14</b>	<b>V15</b>	<b>V16</b>	<b>V17</b>
<b>V18</b>	<b>V27</b>	<b>V28</b>	<b>V29</b>	<b>V30</b>
<b>V31</b>	<b>V32</b>	<b>T6</b>		

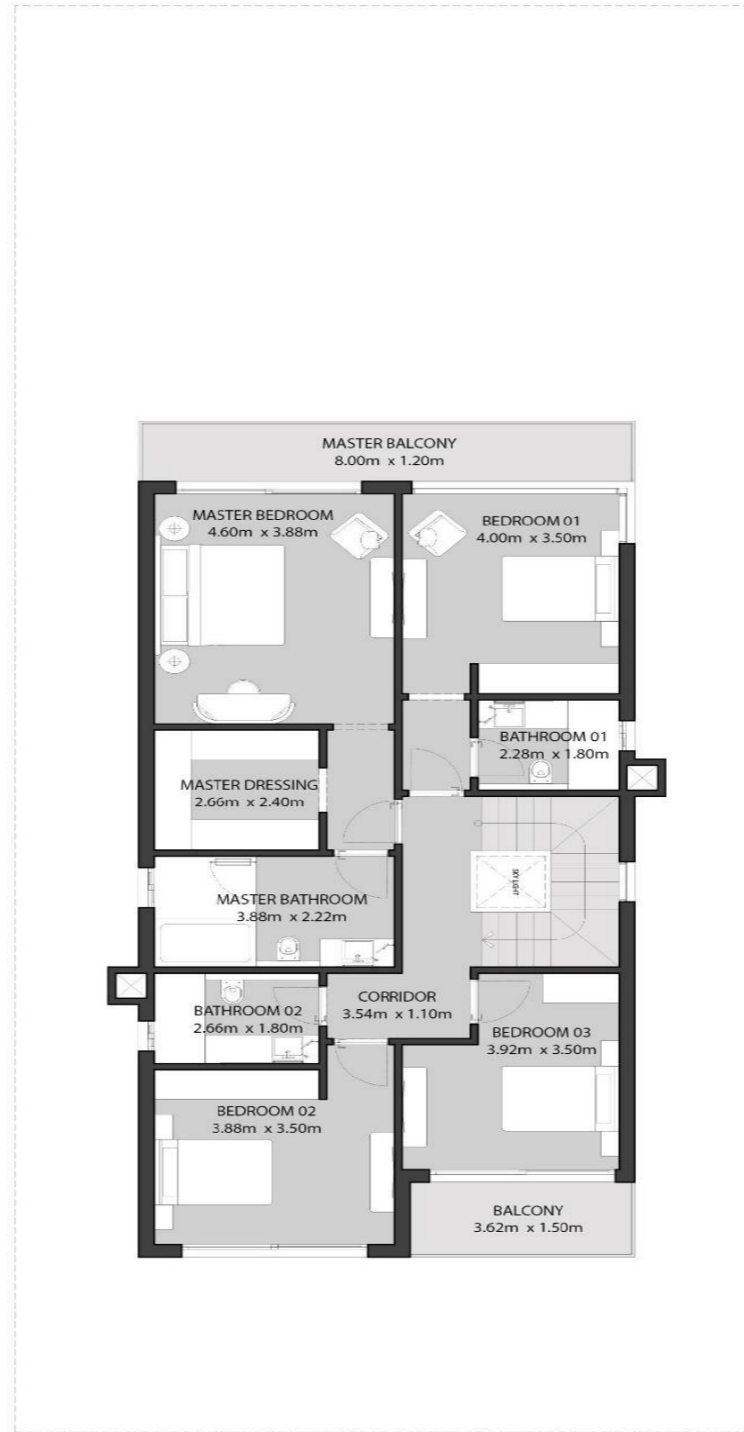


**ROOF FLOOR 62.00 M2**

**STAND ALONE RIGHT ( 350.00 ) M2**



**GROUND FLOOR 144.00 M2**



**FIRST FLOOR 144.00 M2**

**VILLA NUMBER:**

<b>V6</b>	<b>V7</b>	<b>V8</b>	<b>V10</b>	<b>V11</b>
<b>V12</b>	<b>V13</b>	<b>V19</b>	<b>T1</b>	<b>T2</b>
<b>T3</b>	<b>T4</b>	<b>T5</b>	<b>T7</b>	<b>T8</b>
<b>T9</b>	<b>T10</b>	<b>T11</b>		



**ROOF FLOOR 62.00 M2**

# T ZONE







ENTRY GATE

BALCONY

TERRACE GARDEN

PRIVATE FENCE

ROOF GARDEN





PRIVATE FENCE

ROOF TERRACE

ROOF GARDEN

BALCONY

PRIVATE GARDEN





**TOWNHOUSE CORNER LEFT ( 258.00 ) M2**



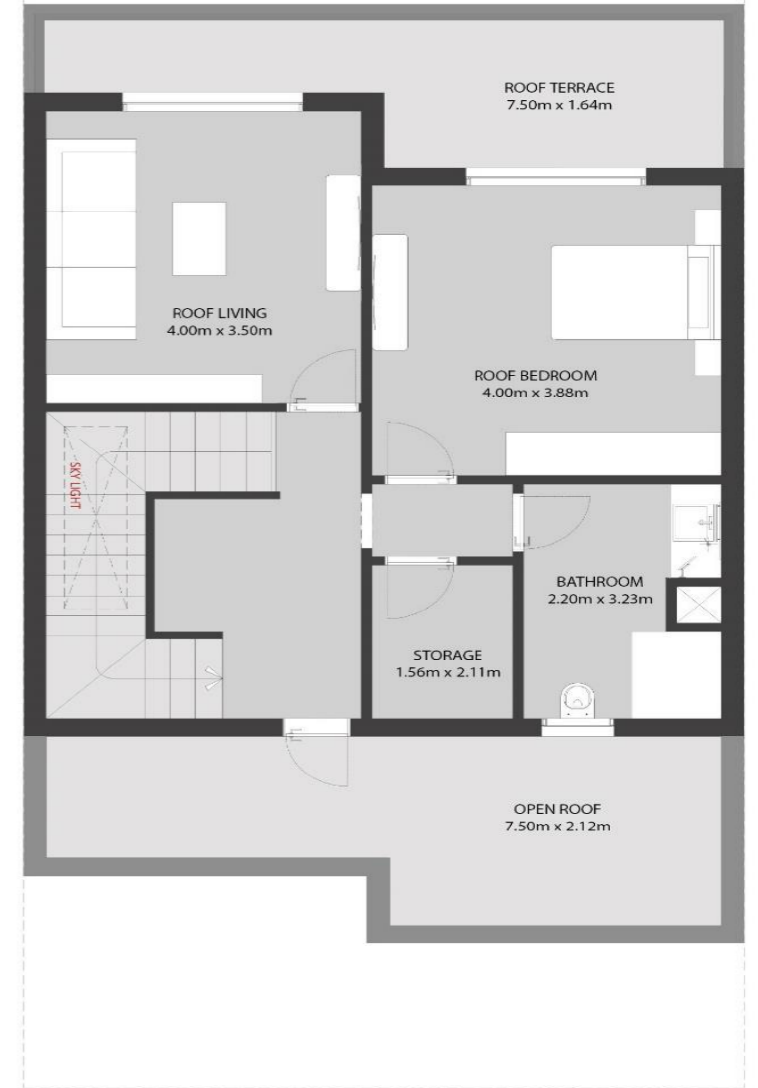
**GROUND FLOOR 95.60 M2**



**FIRST FLOOR 95.60 M2**

**VILLA NUMBER:**

<b>V1</b>	<b>V20</b>	<b>V25</b>	<b>V33</b>	<b>T15</b>
<b>T19</b>	<b>T23</b>	<b>T27</b>	<b>T33</b>	<b>T37</b>
<b>T41</b>	<b>T47</b>	<b>T49</b>	<b>T55</b>	<b>T57</b>



**ROOF FLOOR 66.80 M2**

**TOWNHOUSE CORNER RIGHT ( 258.00 ) M2**



**GROUND FLOOR 95.60 M2**



**FIRST FLOOR 95.60 M2**

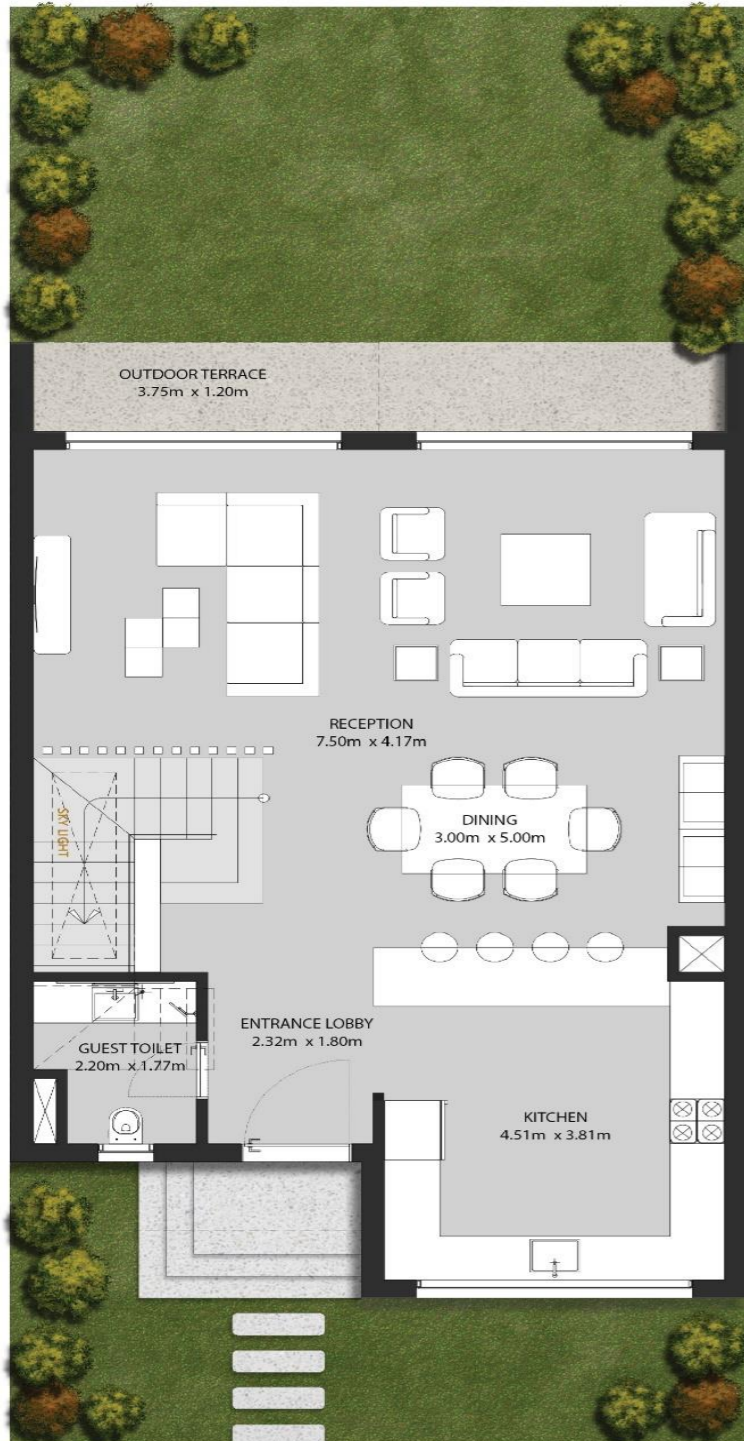
**VILLA NUMBER:**

<b>V5</b>	<b>V24</b>	<b>V26</b>	<b>V34</b>	<b>T12</b>
<b>T14</b>	<b>T18</b>	<b>T22</b>	<b>T26</b>	<b>T32</b>
<b>T36</b>	<b>T40</b>	<b>T46</b>	<b>T48</b>	<b>T54</b>



**ROOF FLOOR 66.80 M2**

**TOWNHOUSE MIDDLE LEFT (258.00) M2**



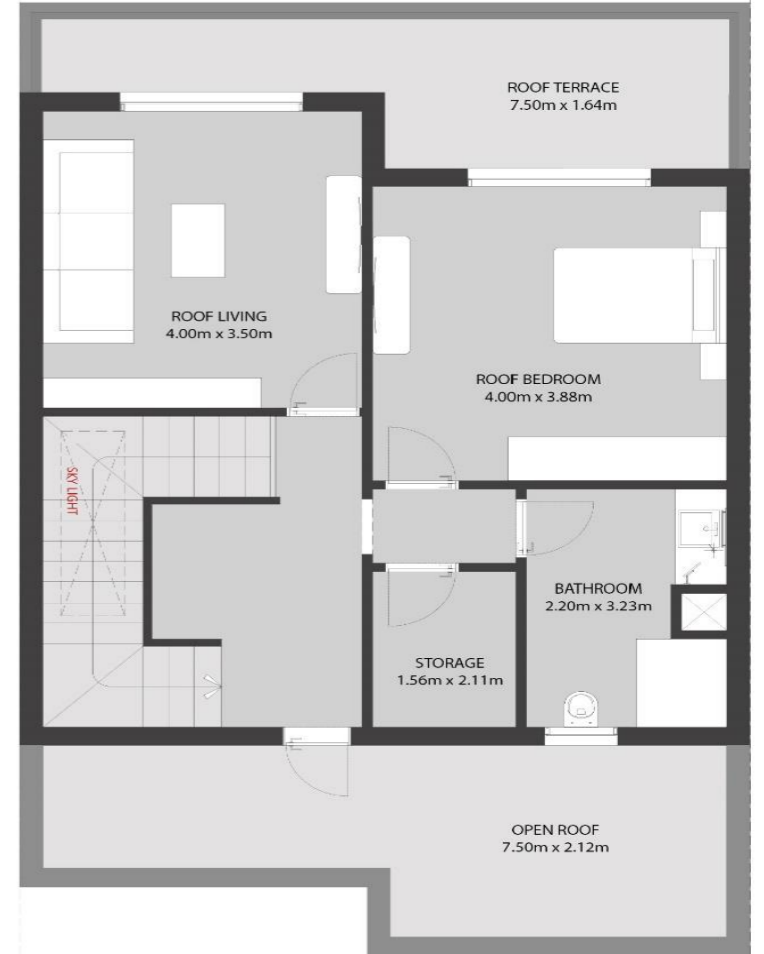
**GROUND FLOOR 95.60 M2**



**FIRST FLOOR 95.60 M2**

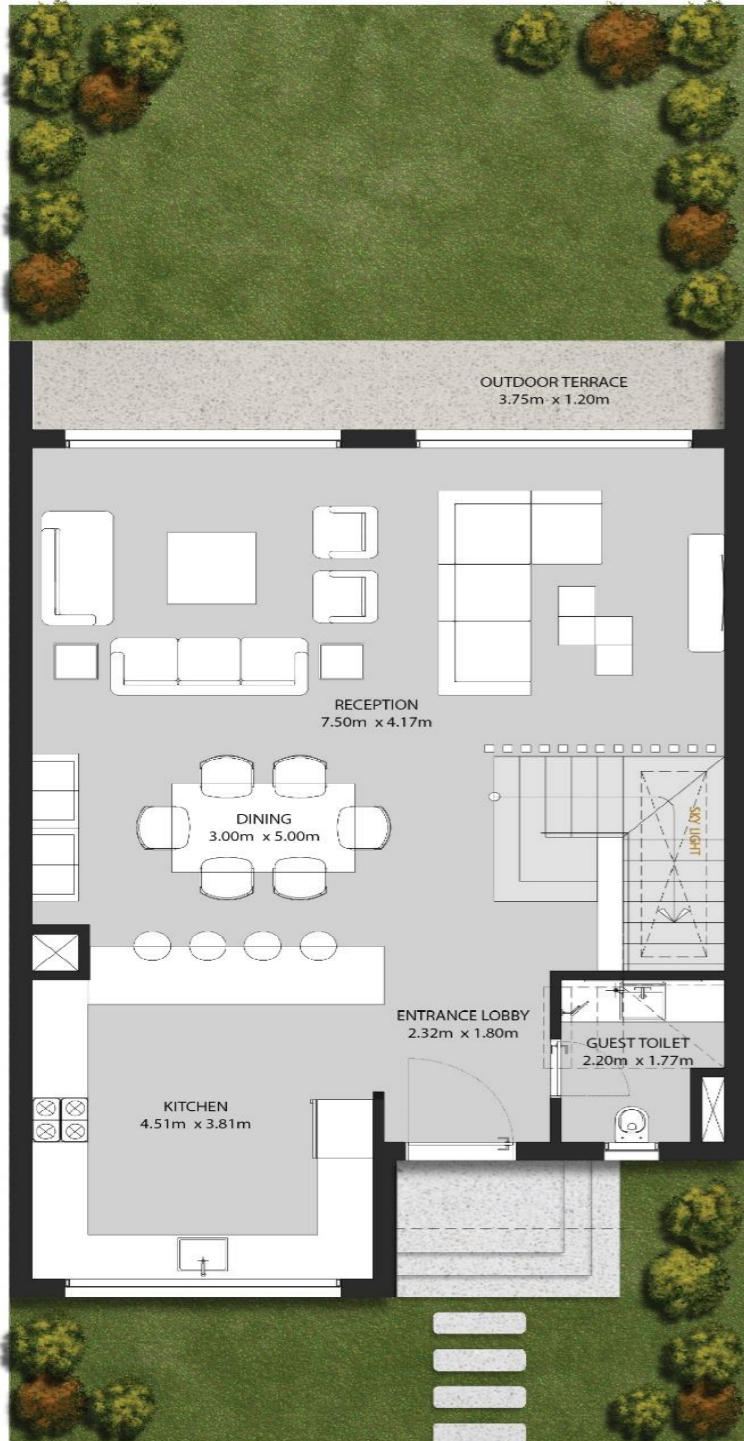
**VILLA NUMBER:**

<b>V2</b>	<b>V4</b>	<b>V22</b>	<b>T13</b>	<b>T17</b>
<b>T21</b>	<b>T25</b>	<b>T29</b>	<b>T31</b>	<b>T35</b>
<b>T39</b>	<b>T43</b>	<b>T45</b>	<b>T51</b>	<b>T53</b>



**ROOF FLOOR 66.80 M2**

**TOWN HOUSE MIDDLE RIGHT ( 258.00 ) M2**



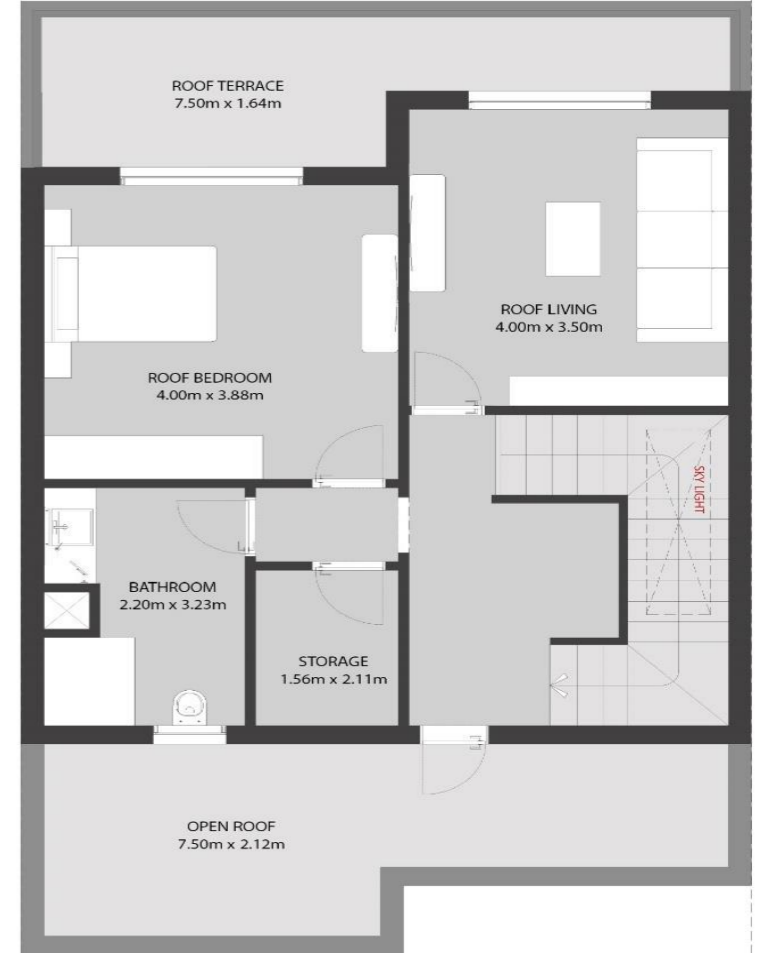
**GROUND FLOOR 95.60 M2**



**FIRST FLOOR 95.60 M2**

**VILLA NUMBER:**

V3	V21	V23	T16	T20
T24	T28	T30	T34	T38
T42	T44	T50	T52	T56



**ROOF FLOOR 66.80 M2**





(2 BEDROOMS)

APARTMENT | SUNTERRA PARK





TERRACE GARDEN

ROOF GARDEN

PRIVATE FENCE

ENTRY GATE

BALCONY

A5  
VILLA B

A5  
VILLA B



ROOF GARDEN

ROOF TERRACE

PRIVATE FENCE

PRIVATE GARDEN

BALCONY





2 BED GROUND FLOOR ( 112.00 ) M2

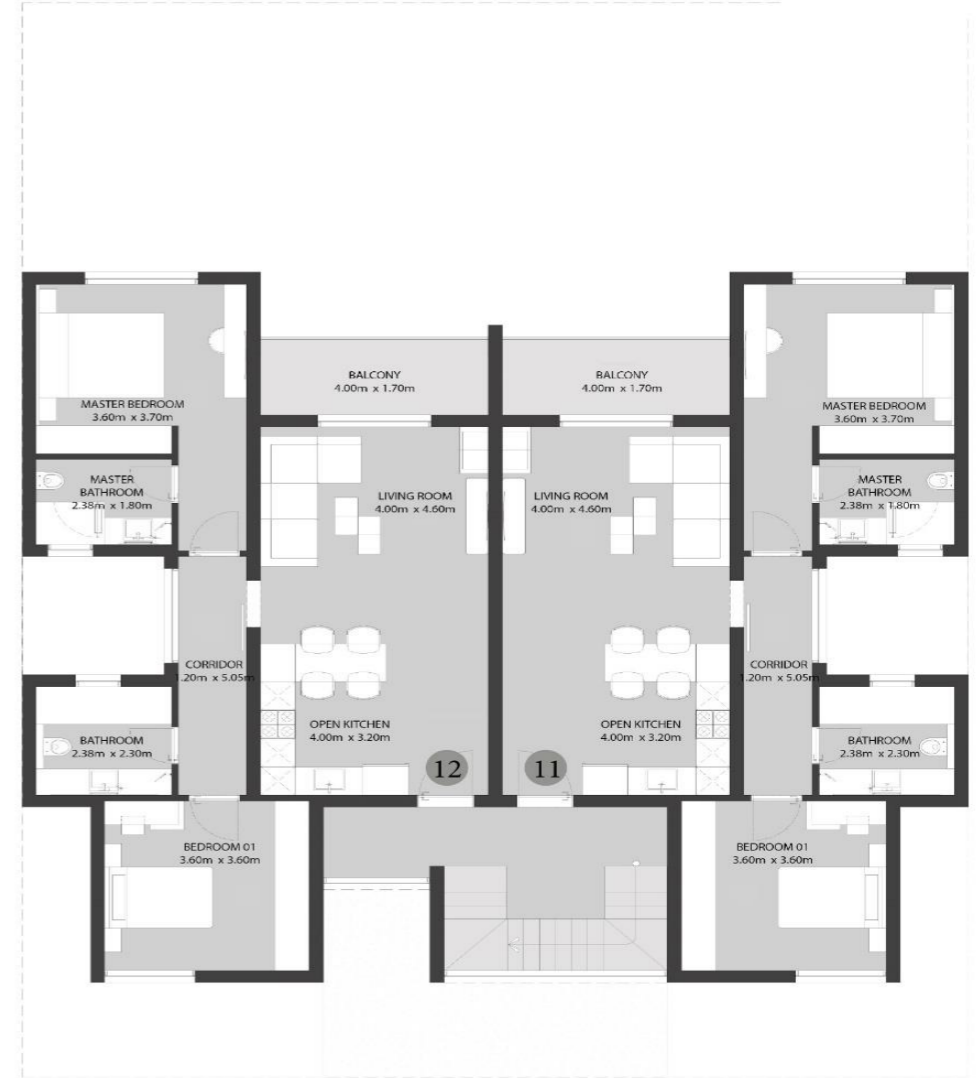
2 BED FIRST FLOOR ( 112.00 ) M2

BUILDING NUMBER:

K300	K500	K700	
R100	R300	R500	R700



GROUND FLOOR



FIRST FLOOR

**2 BED APT. SECOND FLOOR ( 110.00 ) M2**

**STUDIO ( 42.00 ) M2**



**SECOND FLOOR**

**BUILDING NUMBER:**

<b>K300</b>	<b>K500</b>	<b>K700</b>	
<b>R100</b>	<b>R300</b>	<b>R500</b>	<b>R700</b>



**ROOF FLOOR**

2 BED APT. GROUND FLOOR ( 112.00 ) M2

2 BED APT. FIRST FLOOR ( 112.00 ) M2

BUILDING NUMBER:

R200	R400	R600	
K100	K200	K400	K600



GROUND FLOOR

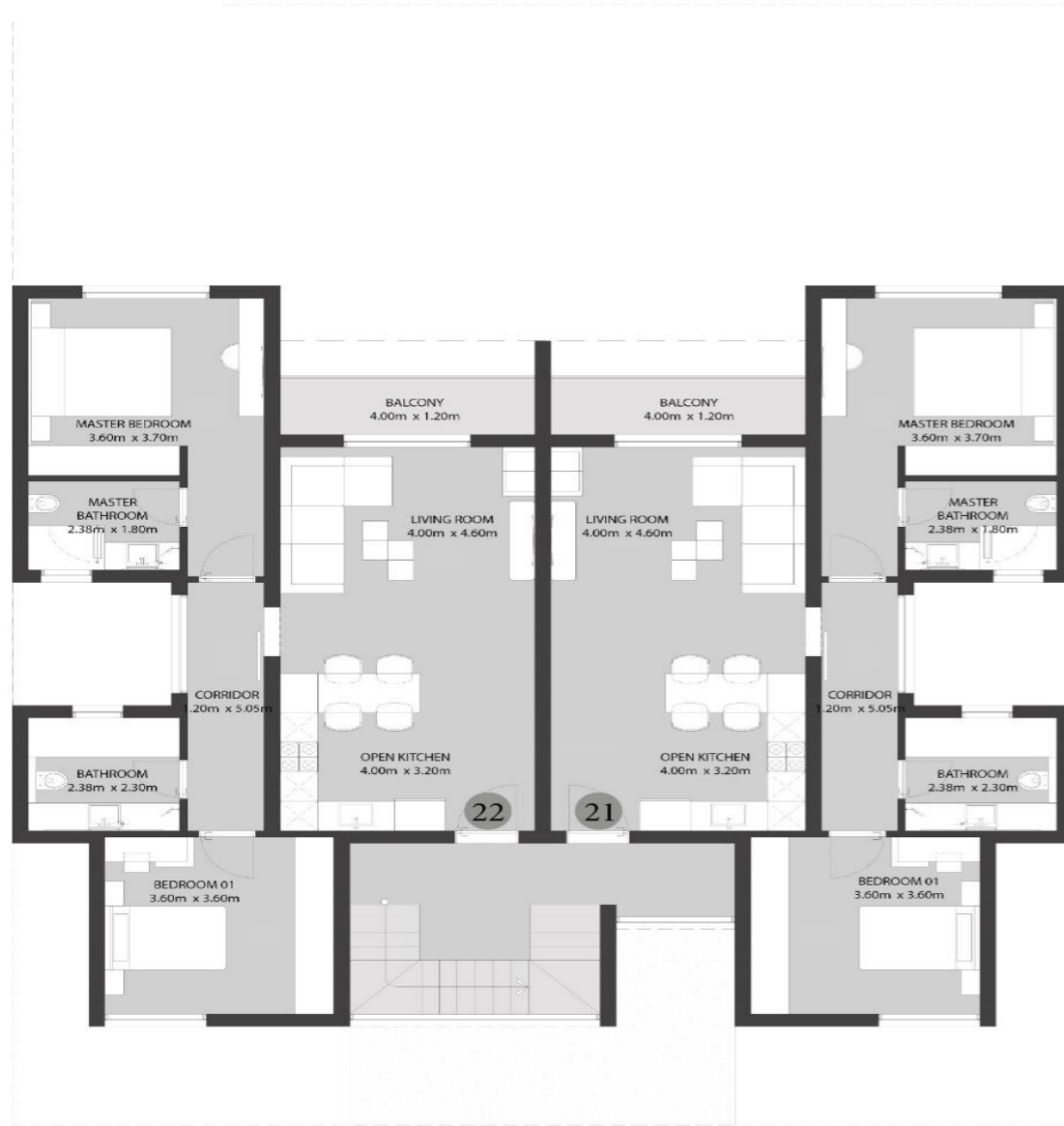


FIRST FLOOR



2 BED APT. SECOND FLOOR ( 110.00 ) M2

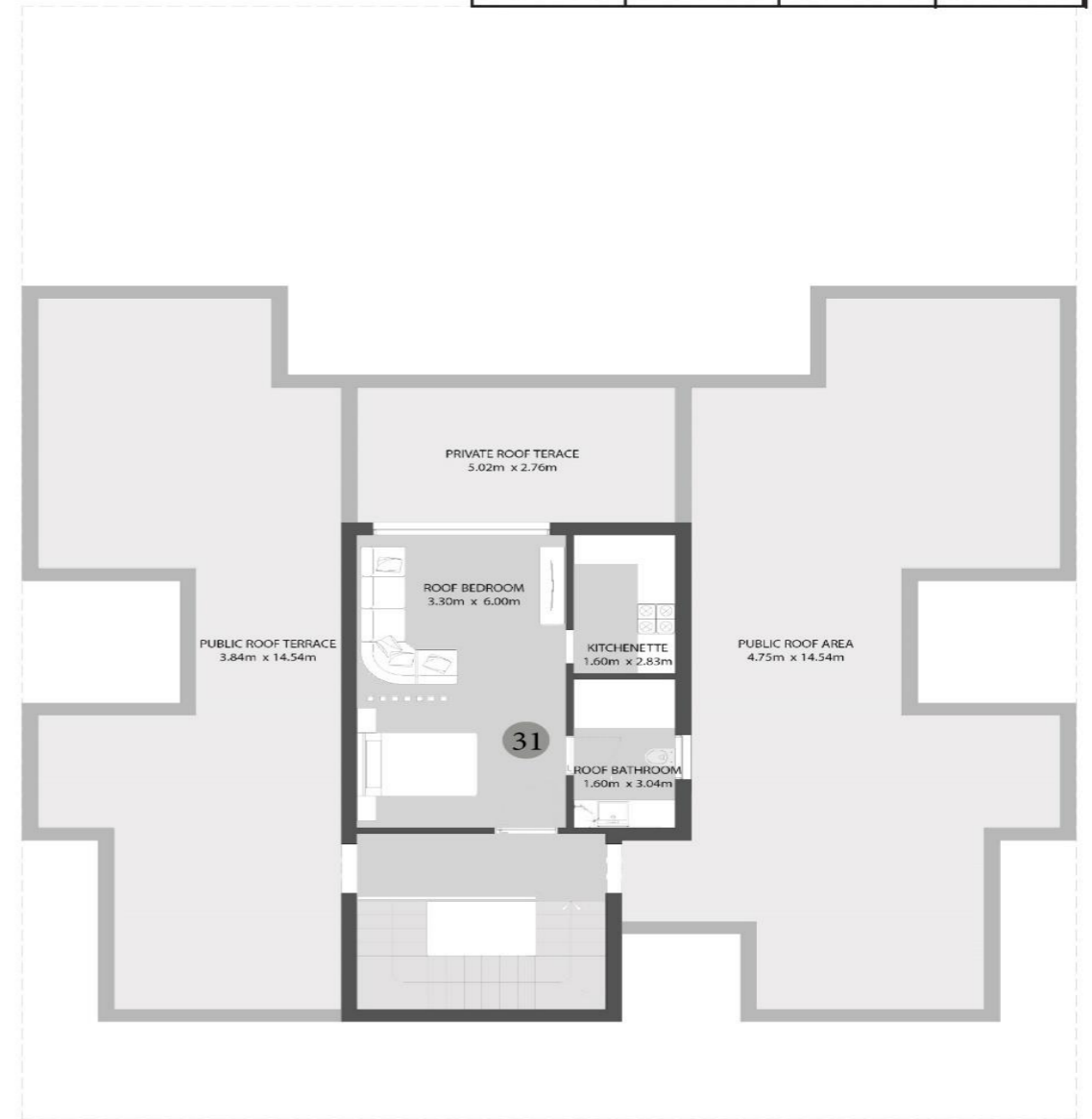
STUDIO ( 42.00 ) M2



SECOND FLOOR

BUILDING NUMBER:

R200	R400	R600	
K100	K200	K400	K600



ROOF FLOOR



# L ZONE







BALCONY

ENTRY GATE

PRIVATE FENCE

TERRACE GARDEN

ROOF GARDEN

B5  
VILLA A

B5  
VILLA A



PRIVATE GARDEN

BALCONY

ROOF TERRACE

PRIVATE FENCE

ROOF GARDEN

3 BED APT. ( 145.00 ) M2  
 1 BED APT. ( 77.00 ) M2  
 STUDIO ( 40.00 ) M2



GROUND FLOOR



FIRST & SECOND FLOOR

BUILDING NUMBER:

L200	L400	L600
L800	L1000	



ROOF FLOOR

3 BED APT. ( 145.00 ) M2  
 1 BED APT. ( 77.00 ) M2  
 STUDIO ( 40.00 ) M2

BUILDING NUMBER:

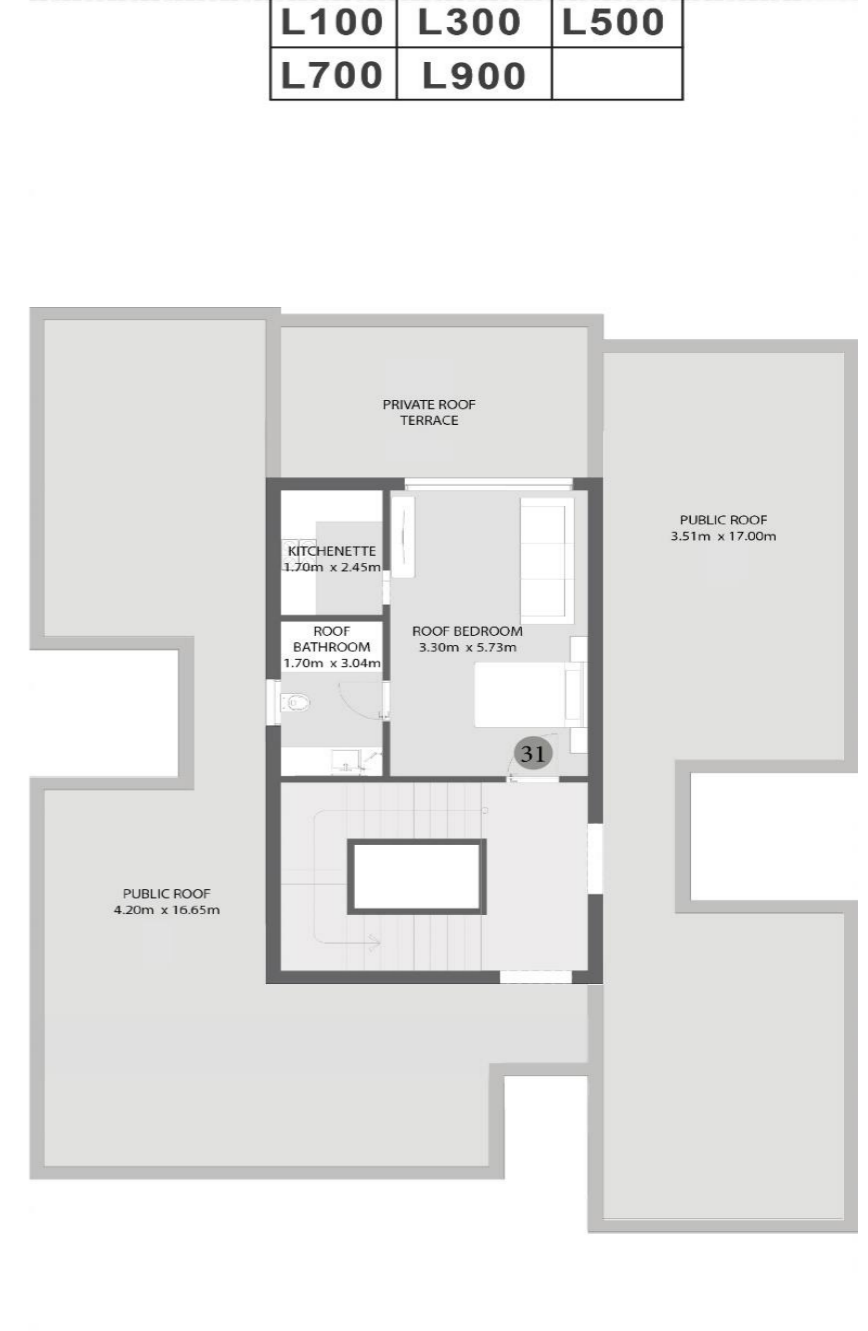
L100	L300	L500
L700	L900	



GROUND FLOOR



FIRST & SECOND FLOOR



ROOF FLOOR













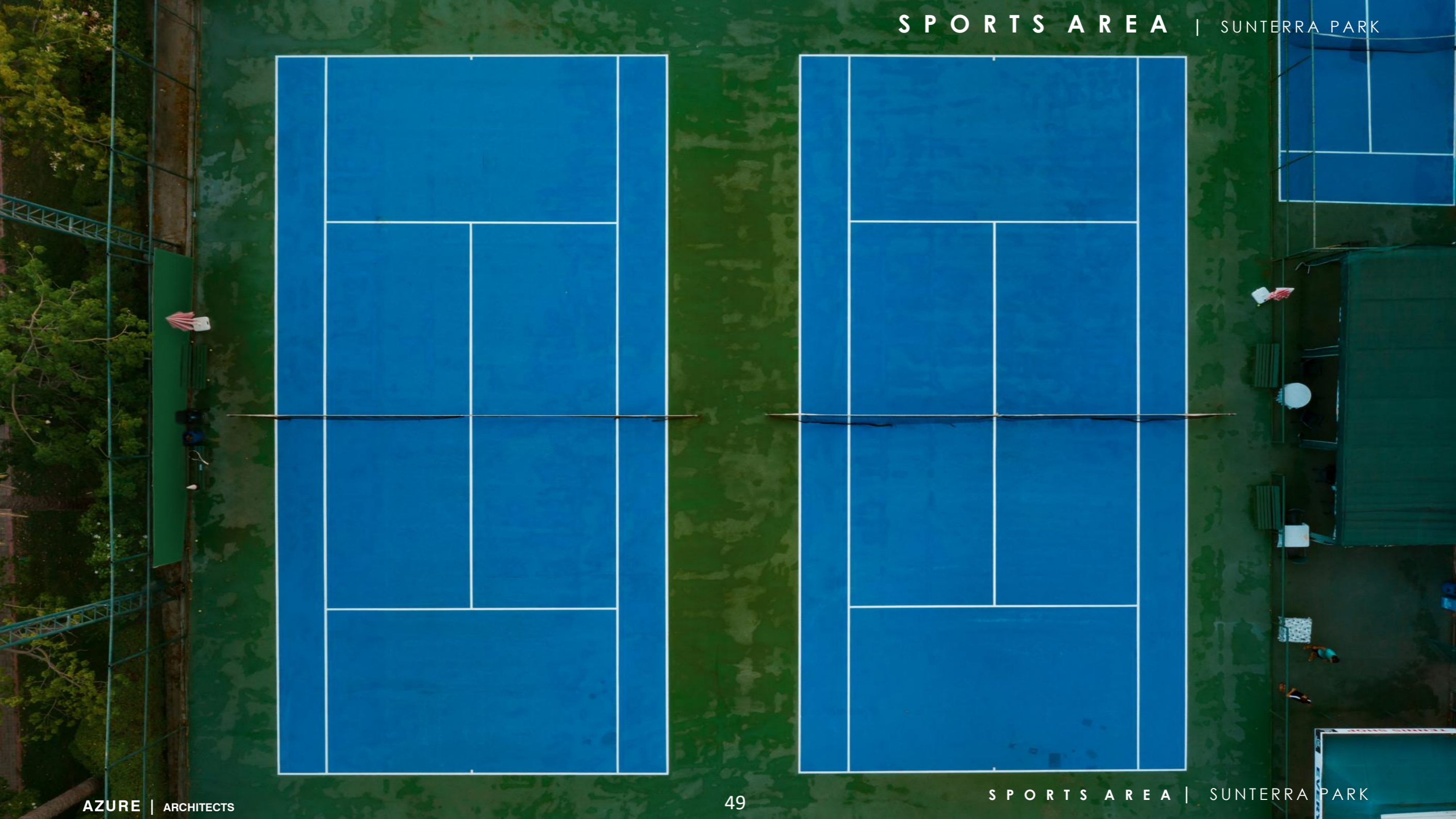












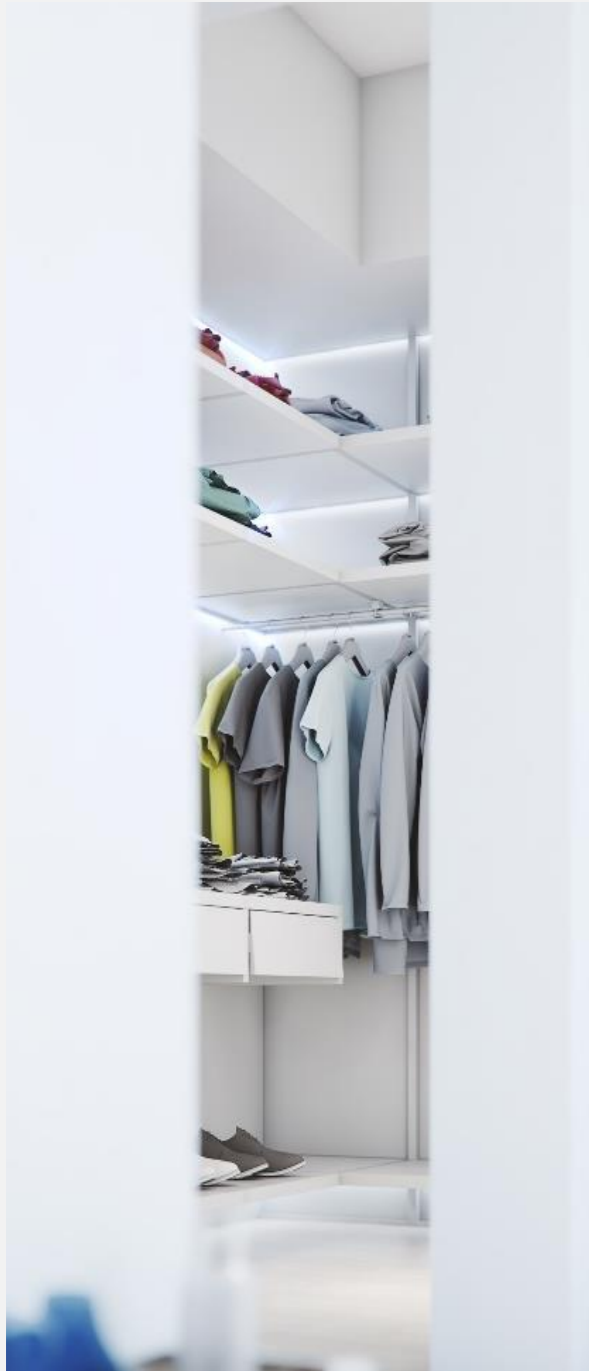


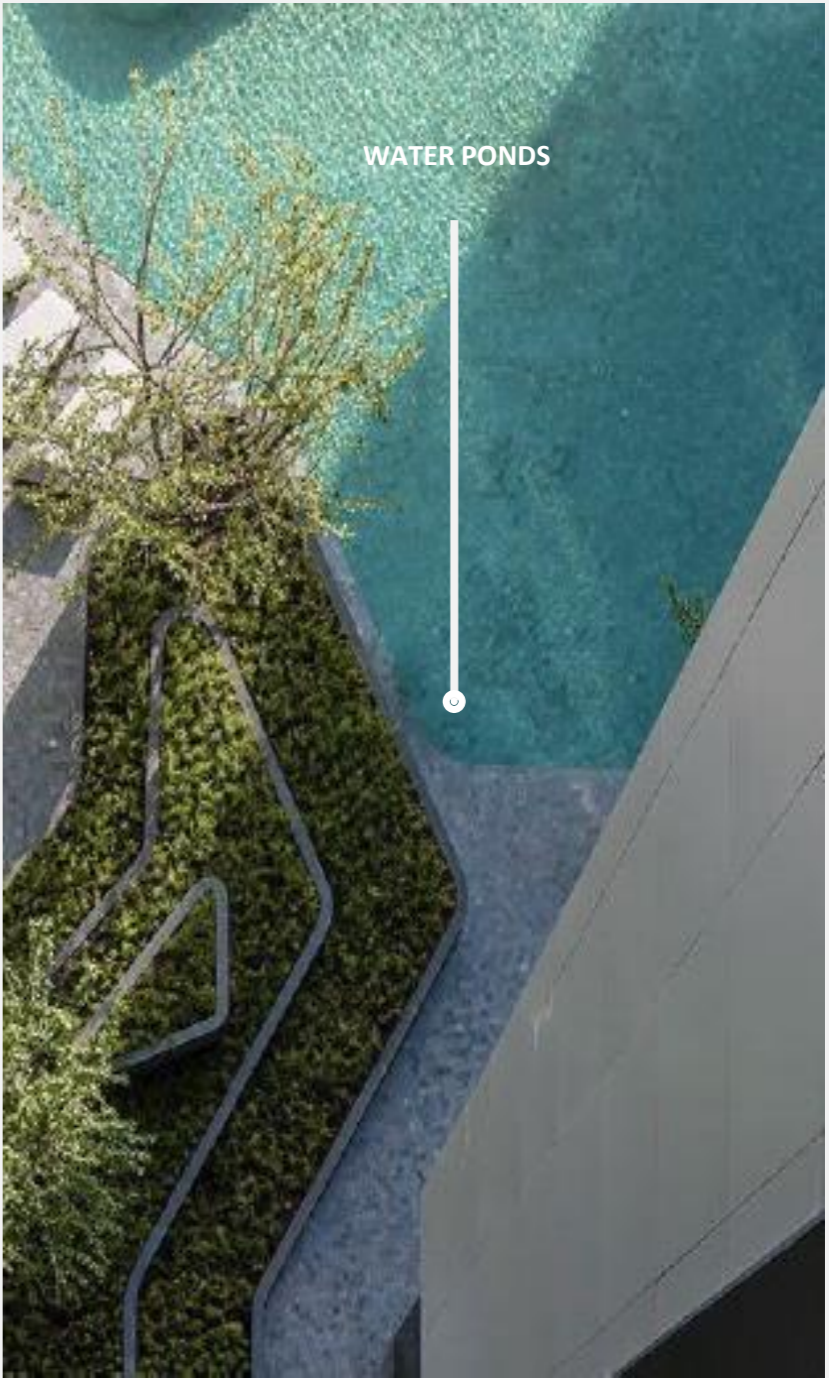
50

GENERAL - INTERIOR



SUNTERRA PARK







WOODEN FLOWER BOX



LANDSCAPE WATER FEATURE



PAVEMENT TEXTURES

# Life in multicolor

A woman with long hair tied back, wearing a white tank top and dark shorts, is running on a gravel path in a park. She is wearing large headphones. The scene is set during sunset or sunrise, with a warm, golden light. In the background, there are trees, a building, and a street lamp. The overall atmosphere is peaceful and active.

Live in a trendsetting community, guided by ultimate interconnectivity and delightful walkability.

Recharge in a sprawling central park and allow soothing nature to restore balance to your soul, body and mind.

Shop where world-class brands and stylish boutiques never fail to impress.

Dine in artisanal bistros and fine restaurants, guaranteeing to satisfy your taste buds.

Immerse in world leading hospitality and let royal treatment teleport you to an otherworldly dimension.



CAR PARKS



SEATING AREAS



SPA & MASSAGE



SHOPPING MALL



SWIMMING POOLS



GYM



ELEVATOR



SECURITY GATES



WASTE COLLECTION SERVICE



FACILITY MANAGEMENT



24 HOUR SECURITY & MONITORING



CLEANING EXTERIOR FACADES



KIDS AREA

# SUNTERRA

*Park*

